

WELCOME

Montcaret old post office.



18, Rue des Anciennes Postes

24230 MONTCARET

Dear travelers,

We are delighted to welcome you to the Montcaret old post office cottage.

This accommodation is located between Bordeaux and Bergerac.

You will find nearby the facilities that will allow you to have a pleasant sojourn.

Games area – pétanque court, as well as the main shops (Bakery-Butchery-Tobacco press).

And a few kilometers away, canoeing, leisure area with swimming.

You can visit the Gallo-Roman Villa of Montcaret, the medieval city of Saint Emilion, the many bastides in the Region and the towns of Bordeaux or Bergerac.

To make your sojourn as pleasant as possible, you will find here all the information you need.

When needed, we can be reached at the following contact details:

NAME OF THE OWNER :

Municipality of Montcaret

CONCIERGE: Alexandra BECK

OWNER'S ADDRESS :

19 Rue de le Villa Gallo-Romaine 24230 MONTCARET

PHONE NUMBER :

TOWN HALL : 05 53 58 60 06

MOBILE NUMBER :

In case of emergency contact:

CONCIERGE: Alexandra 06 87 61 65 41

Summary :

Reminder of formalities	Page 4
Useful informations	Pages 5-6
Contact and emergency numbers	
Accessibility	Pages 7-8
Useful addresses	Pages 9 to 11
Explanatory sheets	Pages 12-13
Good practices	Page 14

Internal regulations



Non-smoking accommodation.



1 - Sound parties are prohibited.



2 – Pets are accepted, please notify the concierge who will confirm the reception conditions. Category 1 and 2 dogs are not accepted.

The animal must not be left unsupervised in the accommodation or in the garden, it must be kept on a leash in the street.

Travelers will be sure to pick up animal droppings or droppings strewn around the garden. The bags containing the droppings must be placed in the green bin.

3 - Travelers will place their trash (kitchen-bathroom-toilet) in the bins provided for this purpose stored in the garden.

4 - Travelers should be careful not to leave food in the oven and microwave.

5 - All utensils and appliances must be cleaned by travelers after each use.



6 - Travelers will be sure to leave the accommodation clean and tidy. Please do the dishes and put them away before leaving the cottage. Sheets can be removed and put together on each bed.

7- Before leaving the accommodation, travelers will check:

- **that all lights are turned off.**
- **that all doors are locked**

The keys to the front door must be placed in the key box.

8-Heating - air conditioning : Use only the + or - keys.

Do not touch the MODE key

Useful informations:



Trash cans:

Inside the accommodation you will find 3 bins:

- 1 bin with a garbage bag for household waste.
- 1 bin for packaging to be placed in the selective sorting bin.
- 1 tray for glass.

Outside the accommodation you will find 2 bins:

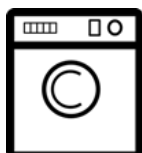
- The green bin for household waste.
- The bin with a yellow lid for selective sorting
- The collective bin for glass is located on the village hall square.



Selective sorting: Explanatory sheet attached.



Dishwasher: *simplified sheet for use attached.*



Washing machine: *simplified sheet for use attached.*



WIFI: Box fibre.

Numbers to call in case of emergency:



*In the event of a fire,
Firefighters*



15 *In the event of an accident or illness
Emergencies :Ste Foy la Grande hospital.*

Tel 05 57 41 96 96



SMS call dedicated to hearing impaired people



Single european number

SMS call dedicated to hearing impaired people



Doctor

Health house VELINES « Les Réaux » à 3.4 km

Tel 05 53 24 24 01



Pharmacy: *VELINES «Les Réaux» à 3.4 km*

Tel 05 53 27 51 38



Hospital :

SAINTE FOY LA GRANDE 14.4 km Tel 05 57 41 96 96

LIBOURNE 30 km Tel 05 57 55 34 34

BERGERAC 41.8 km Tel 05 53 63 88 88



Police : *VELINES Tel 05 53 74 60 80*



Veterinarian: *VELINES « Les Réaux » « La Cigogne »*

Tel 05 53 73 30 01.

Accessibility :

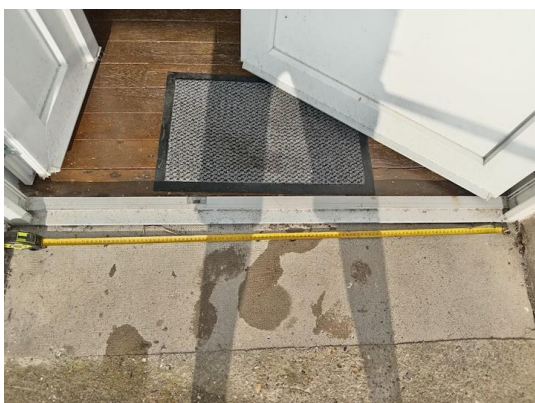


Accessible parking space

There is a private parking space that is at least 3.35 metres wide. Or there is a public parking space reserved for people with reduced mobility with clear signage or markings

Level Guest Entrance

The guest entrance is free of steps and obstacles, and the threshold of the door is less than 5 cm high. In a hotel or apartment building, the guest entrance is where guests access their room. For all other types of accommodation, the guest entrance is the entrance to the accommodation.



The width of the passenger entrance is at least 81 cm. Access ramp and entrance door.

Useful addresses :



Le Quignon de Faustine MONTCARET
Tel 0553634710

Bakery-Pastry shop

 **LeQuignon DeFaustine**

Bread dispenser

**Butcher's shop delicatessen
caterer**

MONTCARET

 **Boucherie Ludovic Arnault**

Tel 05 24 08 41 49



**Tabacco/newspaper
store**

Grocery fund

Bread store

 **Tabac Presse Fdj Montcaret**

Tel 05 53 24 19 19



Market gardener - Direct sales - Local products

MONTCARET

f La Dame Blanche Tel 07 49 34 93 43



Cheese factory

Van der Horst Montcaret

Tel 05 53 58 62 38



Supermarkets



Markets in the région

VELINES : 3 km Carrefour contact

CASTILLON LA BATAILLE : 6 km

Intermarché – Lidl.

ST MAGNE de CASTILLON : 10 km

Leclerc

PORT STE FOY : 10 km

Intermarché

PINEUILH : 12 km

Leclerc

**CASTILLON LA BATAILLE 7.6 km –
monday morning.**

**SAINTE FOY LA GRANDE 14 km
saturday morning.**

**MONTPON MENESTEROL 21 km
wednesday morning.**

**LIBOURNE 28 Km tuesday -friday and
sunday morning.**

**BRANNE 21.300 km – thursday morning
ST SEURIN SUR L'ISLE 22 km – Sunday
morning.**

**BERGERAC 34 km wednesday and
saturday morning**



Tourist offices

Tourist offices Pays Foyen

14 km Tel 05 57 46 03 00 .

Bureau information touristique

Castillon la Bataille 7.6 km

Tel 05 57 40 27 58.

Tourist offices Grand Saint Emilionnais

20 km Tel 05 57 55 28 28.

Tourist Office Bergerac – Quai

Cyrano 34 km Tel 05 53 57 03 11.



Church- Gallo-Roman villa

 Villa gallo-romaine de Montcaret

City hall

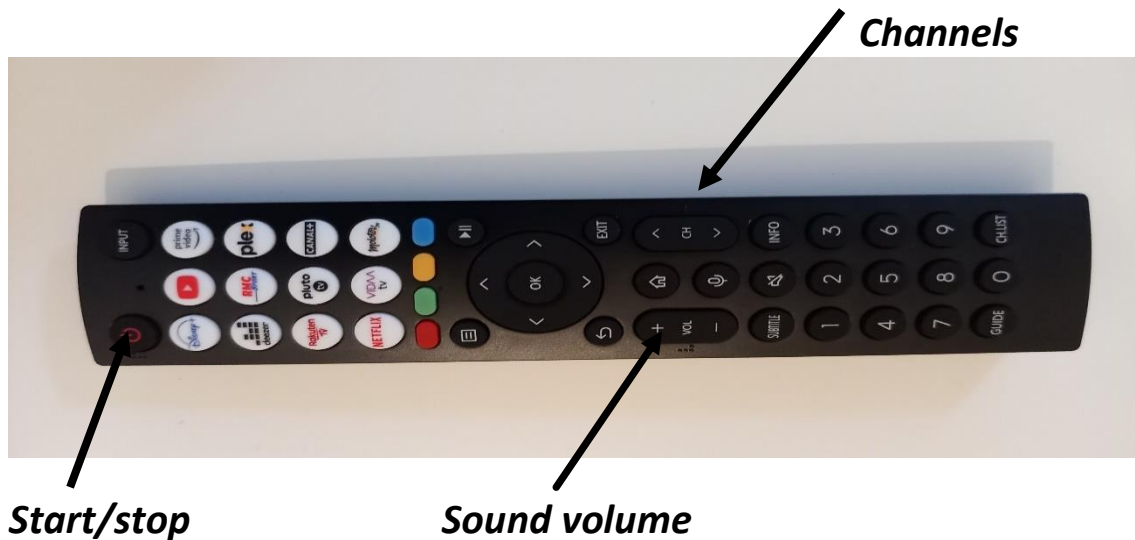
Website : MONTCARET.FR.



The temple.

Explanatory sheets

Color TV remote control :



Télécommande chauffage et clim :



Washing machine



Dishwacher



Start/stop

Programs

To start up

The oven



Start/stop

Thermostat

The hob



Start/stop

Thermostat

Burner choice

Good daily actions :



I only run the washing machine and dishwasher when they are full: short cycles are often sufficient, I choose the "eco" program if it is offered

I do not let the water run unnecessarily when I shower, do the dishes, soap my hands, brush my teeth, shave, etc.

I cover the pan when I boil water. I don't leave the refrigerator or freezer door open for too long and I don't put hot or warm dishes in it. I monitor my freezer and defrost it if necessary. I sort my waste and follow the instructions: food cartons, metals, plastics, paper and cardboard are recyclable. Glass too.

I don't leave hi-fi devices, computers, televisions on standby: a television on standby for 1 whole day consumes as much as when you watch it for the duration of 2 films. I unplug my phone charger as soon as it is charged: always plugged in, they continue to consume electricity. I turn off the light when I leave a room.

I take advantage of daylight when possible: to read, work or other. I air the rooms for at least 10 minutes per day. I remember to turn off my heating during the airing. 19°C in the living rooms and 16°C in the bedrooms are the ideal temperatures... I remember to close the shutters: at night to save energy on heating, and in summer to keep the interior cool.

100% des emballages en carton et des papiers



TOUS LES EMBALLAGES



A collection of various plastic and paper packaging items, including:

- Two plastic shopping bags (one green, one pink and blue patterned).
- A white plastic container with a blue lid labeled "crème fraîche".
- A clear plastic container with a red lid containing fruit.
- A clear plastic egg carton.
- A clear plastic container with a red lid, possibly for salad or fruit.
- A brown plastic cup.
- A small black and silver object, possibly a stapler or a small tool.
- A green and blue plastic bottle.
- A yellow plastic container.
- A white plastic container.
- A red packet labeled "FROMAGE RAPE".
- A small packet labeled "Menthe".
- A small packet labeled "Jambon".
- A small packet labeled "Dentifrice".
- A small packet labeled "LÉGUMES SURGELES".
- A small packet labeled "chips".

**100% des emballages
en métal**

**NOUVEAU**